

# MATERIALIEN & FARBEN BÜROMÖBEL

MATERIALS AND COLOURS FOR OFFICE FURNITURE | MATÉRIAUX & COLORIS MOBILIER DE BUREAU | MATERIALI E COLORI PER MOBILIO DA UFFICIO

SITAG  
by Nowy Styl



SYSTEMS  
FURNITURE



EXCLUSIVE  
FURNITURE

CUSTOMIZED SOLUTIONS

# FARBEN COLOR COULEURS COLORI

Farbe ist Information und Emotion, schafft Atmosphäre, dient der Orientierung und Identifikation. Sie regt die Sinne an, fördert Kreativität und gestaltet Stimmungen.

Auf den folgenden Seiten wollen wir Ihnen nicht nur einen Überblick über unsere Materialien und Farben für unsere Büromöbel geben, sondern haben auch „Moodboards“ zusammengestellt, die Ihnen Anregungen für die komplette Gestaltung des Ambientes vermitteln. Sie sollen nicht nur Hinweise geben, welche Farben und Oberflächen sich besonders gut kombinieren lassen, sondern auch als Inspiration für die weitere Ausgestaltung eines Raumes durch Textilien, Bodenbeläge, Lampen, Kunst und Accessoires dienen.

| E | COLOR IS INFORMATION AND EMOTION, CREATES ATMOSPHERE, SERVES AS ORIENTATION AND IDENTIFICATION. IT STIMULATES THE SENSES, PROMOTES CREATIVITY AND CREATES MOODS.

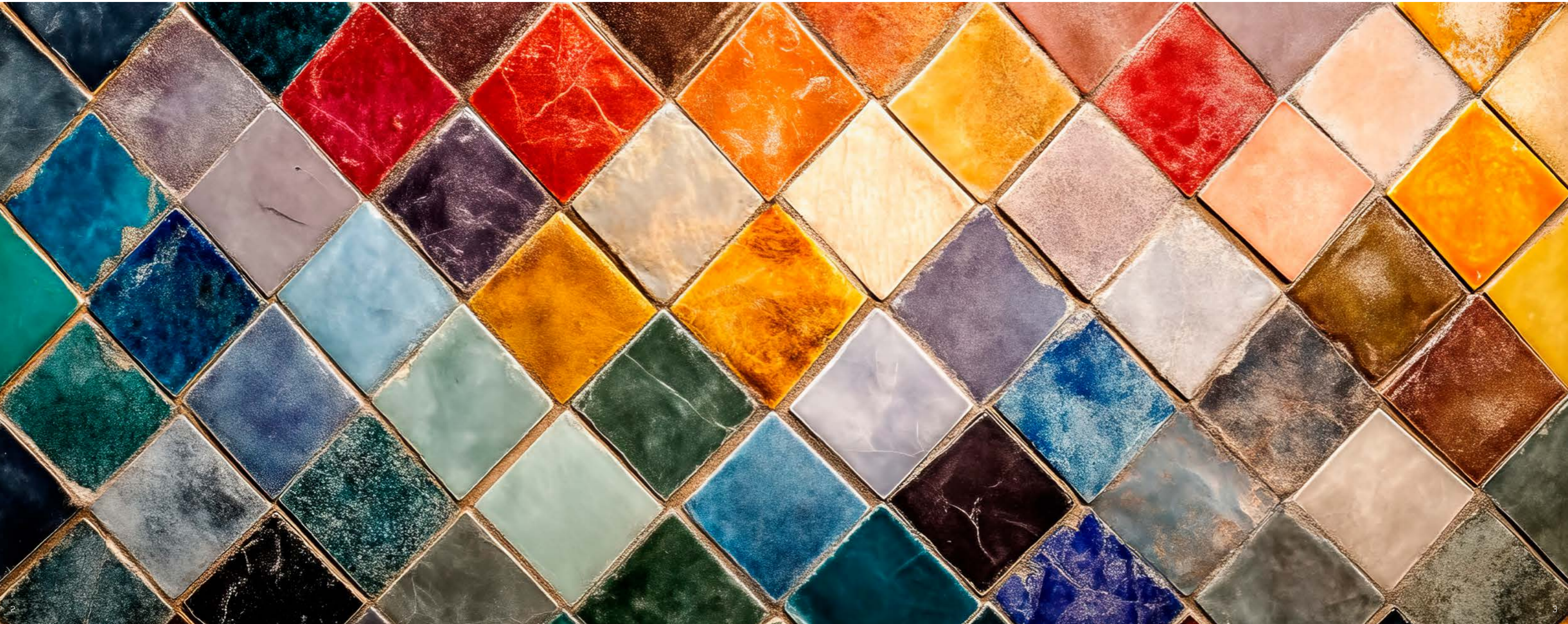
On the following pages we'll not only provide you with an overview of our materials and colours for office furniture. We've also created „mood-boards“ for you to give new ideas for the complete design of your ambience. These pages will not only give you information about which colours and surface can be especially effectively combined: they will also serve as inspiration for further creation of room ambience with textiles, flooring, lighting, art, and accessories.

| F | LA COULEUR EST UNE INFORMATION ET UNE ÉMOTION, ELLE CRÉE UNE ATMOSPHÈRE, SERT À L'ORIENTATION ET À L'IDENTIFICATION. ELLE STIMULE LES SENS, FAVORISE LA CRÉATIVITÉ ET CRÉE DES AMBIANCES.

Les pages suivantes vous proposent non seulement un petit tour d'horizon sur les matériaux et coloris dédiés à notre mobilier de bureau, mais encore un « Mood board » utile à la configuration intégrale de l'ambiance et du style de votre projet. Ces derniers vous renseigneront d'une part sur la composition idéale des coloris et des finitions, et d'autre part, ils seront source d'inspiration en vue de l'arrangement ultérieur de votre espace par des solutions textiles, des revêtements de sol, des luminaires, des accessoires et par des solutions artistiques.

| I | IL COLORE È INFORMAZIONE ED EMOZIONE, CREA ATMOSFERA, SERVE ALL'ORIENTAMENTO E ALL'IDENTIFICAZIONE. STIMOLA I SENSI, PROMUOVE LA CREATIVITÀ E CREA STATI D'ANIMO

Nelle pagine che seguono troverete una panoramica sui materiali e colori per i nostri mobili da ufficio ma anche una serie di "moodboard" che sapranno darvi degli interessanti stimoli e suggerimenti su come gestire sul piano formale l'ambiente nel suo complesso, non solo indicandovi i giusti abbinamenti di colori e superfici ma anche facendovi da ispirazione per l'ulteriore realizzazione degli spazi con materiali tessili, rivestimenti di pavimenti, lampade, oggetti d'arte e accessori.



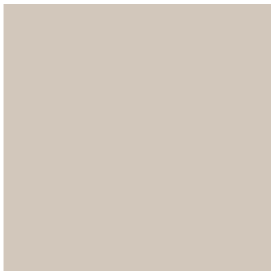
# SMART LUXURY

**AUSGEWÄHLT EDLE MATERIALIEN** erzeugen eine zeitlos klassische Stimmung. Der Mix aus kräftigen Holztönen und Akzenten von glänzendem Chrom strahlt Klasse und Eleganz aus.

**| E | SELECTED PREMIUM MATERIALS** create a timeless, classical mood. The mix of intensive wood shades and accents from brilliant chrome radiate class and elegance.

**| F | LES MATÉRIAUX SÉLECTIONNÉS** créent une atmosphère intemporelle classique. Le panachage entre les teintes boisées vives et les touches de chrome brillant rayonne la classe et l'élégance.

**| I | MATERIALI PREGIATI E SELEZIONATI** creano un'atmosfera classicamente senza tempo. Un mix di forti tonalità di legno e accenti di cromo lucente suggerisce classe ed eleganza.



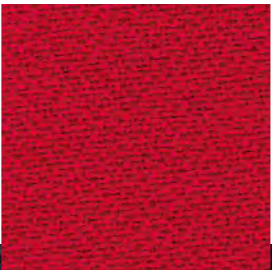
**K702 (NK/HC)** kaschmirgrau | cashmere grey | gris kashmir | grigio cashmere



**NU00** Nussbaum matt | nutwood matt | noyer mat | noce opaco



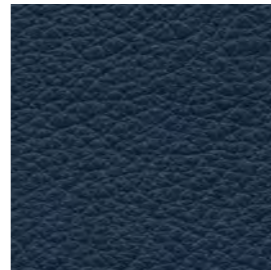
**ST24** rot-braun | red-brown | rouge brun | Rosso-marrone (NCS-6020- R10B)



**4860** leuchtrot | vivid red | rouge lumineux | rosso luminoso



**4132** ash | ash | cendre | ash



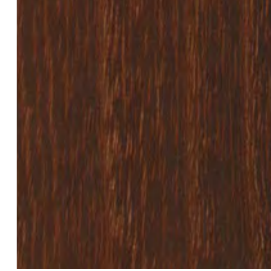
**LS350 (LS82)** marine | navy blue | bleu marine | marineblu



**TM30** braun-schwarz | brownish black | noir brun | nero brunastro



**TM37** oliv | olive | olive | oliva



**AKG200** Akazie geräuchert hochglanz | smoked acacia high gloss | acacia fumé brillant | acacia affumicato lucida



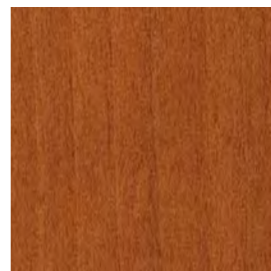
**K4315** Organza | organza | organza | organza



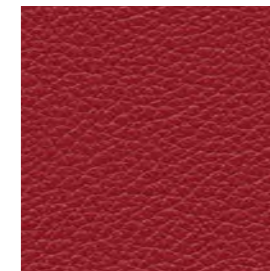
**EIW10 (VM)** Eiche nach Wenge | wenge-stained oak | chêne wenge | rovere in look wengé



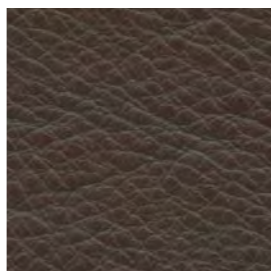
**CR** verchromt | chrome finish | chromé | cromato



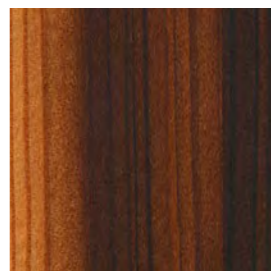
**K100** Kirschbaum matt | cherry matte | cerisier mat | ciliegio opaco



**LS339** weinrot | wine red | rouge vin | rosso vino



**LS306 (LS30)** mokka | mocha | moka | mocha



**LAG10** Lärche geräuchert | smoked larch | mélèze fumé | larice affumicato

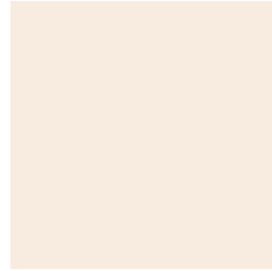
# NATURAL MOOD

**HIER STEHEN NATUR- UND ERDTÖNE** sowie helle Echtholzfuerniere im Vordergrund. Dadurch entsteht ein natürliches, freundliches, harmonisches Farbenspiel. Das samtige Rotbraun hingegen gibt der Komposition Tiefe, Gelassenheit und Bodenhaftung.

**| E | NATURAL AND EARTH SHADES** as well as bright genuine-wood veneers are in focus here. This produces a natural, friendly, harmonic play of colours. Velvety red-brown, on the other hand, endows the composition with depth, serenity, and sure footing.

**| F | SONT MIS EN AVANT ICI** les teintes nature et terre ainsi que les placages bois véritables. Il en découle un jeu de couleurs naturel, chaleureux et harmonieux. En revanche, la couleur rouge brun douce et soyeuse apporte profondeur, sérénité et pondération.

**| I | AD ESSER IN PRIMO** piano sono qui tonalità naturali e di terra come anche impiallaccature chiare in legno naturale che danno luogo ad un gioco di colori naturale e piacevolmente armonico. Il rosso-marrone vellutato, invece, dona alla composizione profondità, serenità e aderenza.



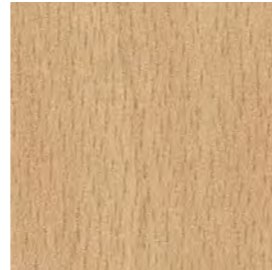
**K216 (AA)** vanille | vanilla | vanille | vaniglia



**LS310** kaschmir | cashmere | cachemire | cashmere



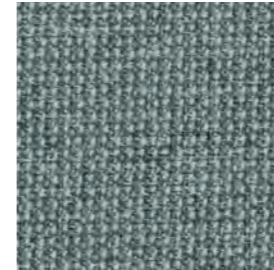
**4834** hellgrün | bright green | vert clair | verde chiaro



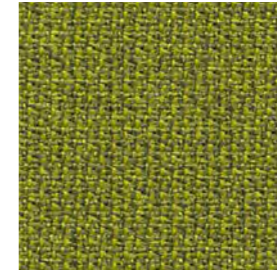
**KBD (MM/HF)** Buche Dekor | maple decor | décor hêtre | faggio decorativo



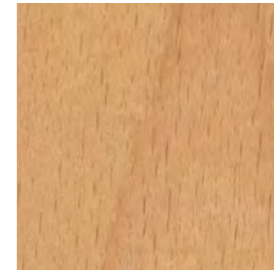
**K645** agavengrün | agave green | vert agave | verde agave



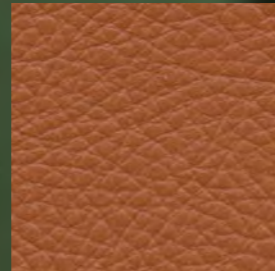
**TM39** mint | mint | menthe | menta



**TM35** grün | green | vert | verde



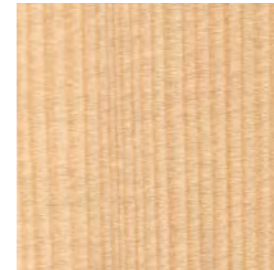
**BU10 (VT)** Buche natur | natural beech | hêtre naturel | faggio al naturale



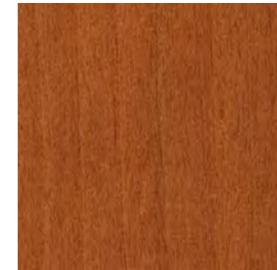
**LS307 (LS50)** cognac | cognac | cognac | cognac



**KAD** Ahorn Dekor | maple decor | décor érable | acero decorativo



**WT10** Weisstanne | silver fir | sapin argenté | abete bianco



**K110** Kirschbaum | cherry | cerisier | ciliegio



**ST29** trüffelbraun | truffle brown | brun truffe | marrone tartufo (NCS-S5005-Y50R)



**ST28** agavengrün | agave green | vert agave | verde agave (NCS-S6010-G50Y)



**TM09** sand | sandy | sable | sabbia



**4883** dunkelblau | dark blue | bleu foncé | blu scuro



**ST24** rot-braun | red-brown | rouge brun | rosso-marrone (NCS-6020-R10B)



**ST90** hell-beige | light beige | beige clair | beige chiaro (NCS-0505-Y10R)



# THE NEUTRALS



**WARMES HOLZ UND KÜHLER STEIN**, silbernes Metall und dunkles Holz sind Merkmale dieser Gruppe. Mit ihr lassen sich kühle Eleganz genauso verwirklichen wie avantgardistische Kontraste oder neutrale Zurückhaltung.

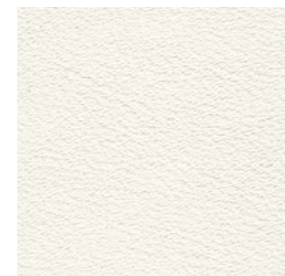
**| E | HOT SAND AND COLD STONE**, silvery metal, and dark wood are the hallmarks of this group. It allows cool elegance, as well as avant-garde contrasts or neutral reserve.

**| F | LE SABLE CHAUD ET LA PIERRE FROIDE**, le métal argent et le bois foncé sont les traits caractéristiques de cette palette. Elle matérialise tantôt une élégance réservée, tantôt des contrastes avant-gardistes ou encore de la modération neutre.

**| I | CALDA SABBIA E FREDDA PIETRA**, metallo argenteo e legno scuro sono le caratteristiche di questo gruppo con il quale è possibile suggerire sia distaccata eleganza che contrasti avanguardisti o neutrale discrezione.



**4132** ash | ash | cendre | ash



**LS390 (LS02)** weiss | white | blanc | bianco



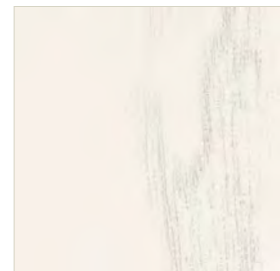
**ST10** weissgrau | white-grey | blanc gris | bianco grigio (NCS-1502-B)



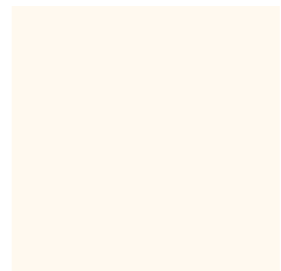
**K4319** hellgrau | light grey | gris clair | grigio chiaro



**K702 (NK/HC)** kaschmirgrau | cashmere grey | gris kashmir | grigio cashmere



**ES16 (VN)** Esche weiss | white ash | frêne blanc | frassino bianco



**K4318 (KS)** weiss | white | blanc | bianco



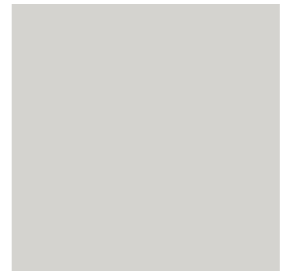
**ES03** Esche schwarz matt | black ash matt | frêne noir mat | frassino nero opaco



**LS301 (LS85)** schwarz | black | noir | nero



**K231** anthrazit | anthracite | anthracite | antracite



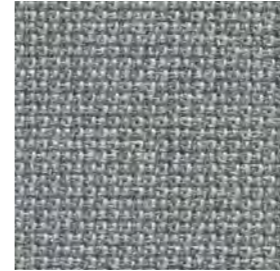
**K708 (MP/BW)** mittelgrau | medium grey | gris moyen | grigio medio



**TM30** braun-schwarz | brownish black | noir brun | nero brunastro



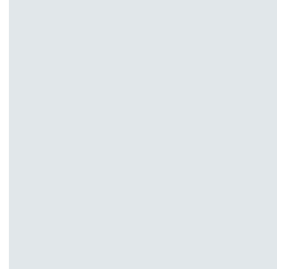
**4869** blaugrau | blue-grey | gris bleu | grigio blu



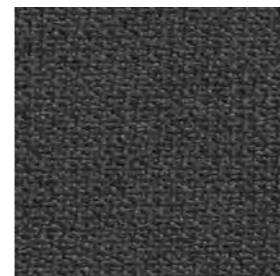
**TM75** grau | grey | gris | grigio



**K4317 (KJ)** schwarz | black | noir | nero



**K245** weissgrau | pale grey | gris blanc | bianco grigio



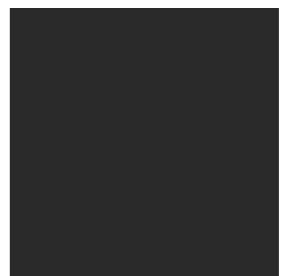
**TM77** anthrazit | anthracite | anthracite | antracite



**LS358** steingrau | stone grey | gris pierre | grigio pietra



**4885** schwarz | black | noir | nero

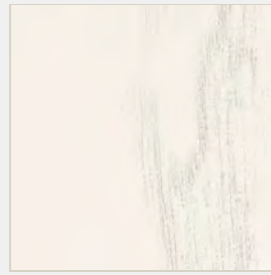


**4023 (JC)** nero | black | noir | nero

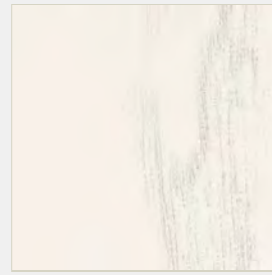
# HOLZ 1

Wood 1 | Bois 1 | Legno 1

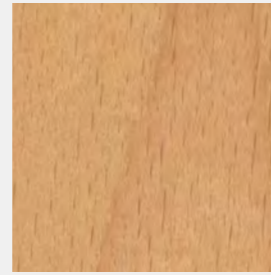
- ✓ SITAG SCHRANKPROGRAMM
- ✓ SITAG MCS SCHRANKSYSTEM
- ✓ SITAG ORGATOWER
- ✓ SITAGPORT
- ✓ SITAGACTIVE
- ✓ SITAGACTIVE LIFTMATIC 2.1 2.0
- ✓ SITAGGO 2.0
- ✓ SITAG MCS TISCHSYSTEM
- ✓ SITAG MCS RAUMGLIEDERUNGSSYSTEM
- ✓ SITAGMOVE
- ✓ SITAGASCENT
- ✓ SITAGINLINE



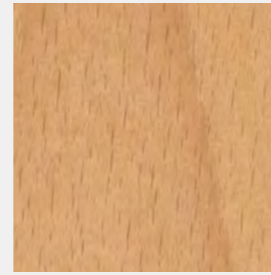
**ES16 (VN)** Esche weiss | white ash | frêne blanc | frassino bianco



**ES06** Esche weiss matt | white ash matt | frêne blanc mat | frassino bianco opaco



**BU10 (VT)** Buche natur | natural beech | hêtre naturel | faggio al naturale



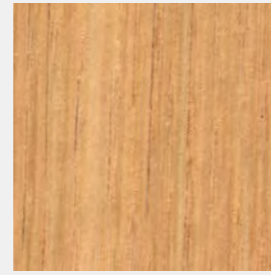
**BU00** Buche natur matt | natural beech matt | hêtre naturel mat | faggio al naturale opaco



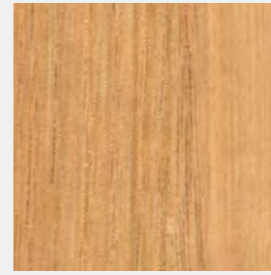
**LA10** Lärche | larch | mélèze | larice



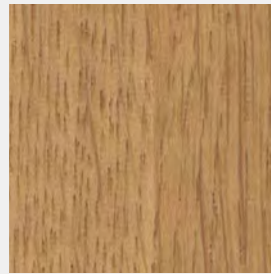
**LA00** Lärche matt | larch matte | mélèze mat | larice opaco



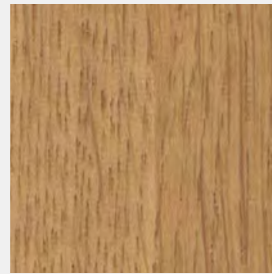
**KS10** Kastanie | châtaigne | châtaigne | castagna



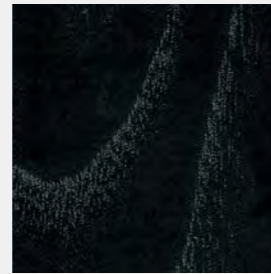
**KS00** Kastanie matt | châtaigne matte | châtaigne mat | castagna opaca



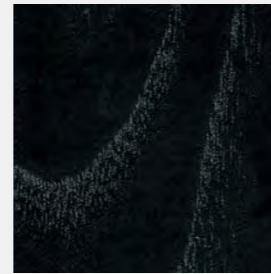
**EI10 (DM)** Eiche natur | natural oak | chêne naturel | rovere naturale



**EI00** Eiche natur matt | natural oak matt | chêne naturel mat | rovere naturale opaco



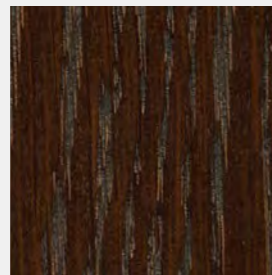
**ES33 (VO)** Esche schwarz | black ash | frêne noir | frassino nero



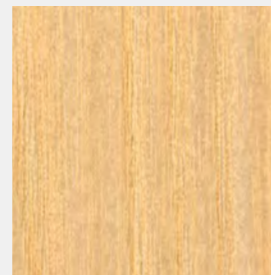
**ES03** Esche schwarz matt | black ash matt | frêne noir mat | frassino nero opaco



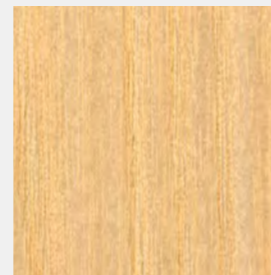
**EIW10 (VM)** Eiche nach Wenge | wenge-stained oak | chêne wenge | rovere in look wengé



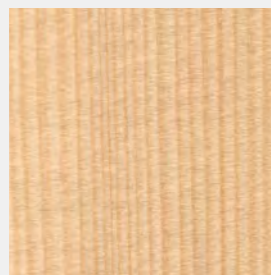
**EIW00** Eiche nach Wenge matt | wenge-stained oak matte | chêne wenge mat | rovere in look wengé opaco



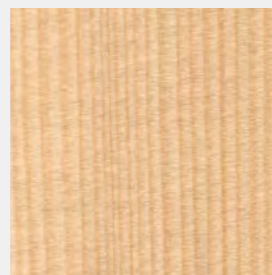
**ES10** Esche | ash | frêne | frassino



**ES00** Esche matt | ash matt | frêne mat | frassino opaco



**WT10** Weisstanne | silver fir | sapin argenté | abete bianco

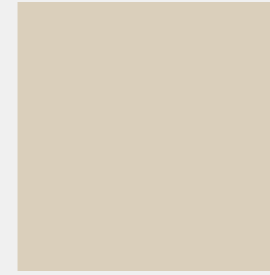


**WT00** Weisstanne matt | silver fir matte | sapin argenté mat | abete bianco opaco

# LINOLEUM

- ✓ SITAG SCHRANKPROGRAMM\*
- ✓ SITAG MCS SCHRANKSYSTEM\*
- ✓ SITAG ORGATOWER\*
- ✓ SITAGPORT\*
- ✓ SITAGACTIVE
- ✓ SITAGACTIVE LIFTMATIC 2.1
- ✓ SITAGGO 2.0
- ✓ SITAG MCS TISCHSYSTEM
- ✓ SITAGMOVE

\*nur Deckel | only cabinet top | seulement coiffe | solo coperchio



**4176** mushroom | mushroom | mushroom | mushroom



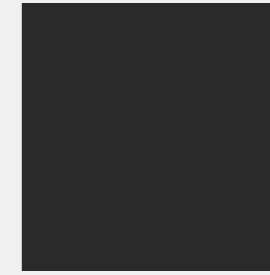
**4132** ash | ash | cendre | ash



**4172 (JM)** mauve | mauve | mauve | malva



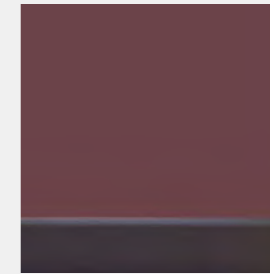
**4154 (JB)** burgundy | burgundy | bordeaux | borgogna



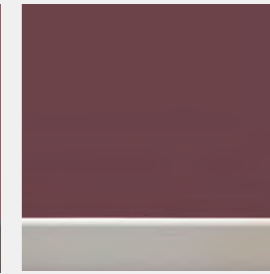
**4023 (JC)** nero | black | noir | nero

## KANTENFARBEN LINOLEUM

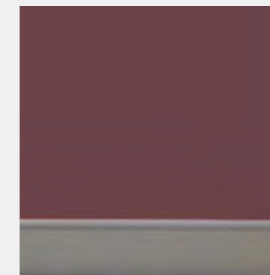
Edge colors linoleum | Couleurs des chants linoléum | Colori dei bordi linoleum



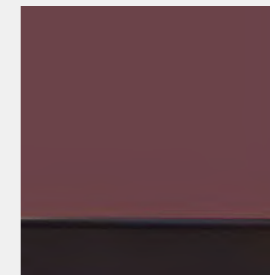
**K231** anthrazit | anthracite | anthracite | antracite



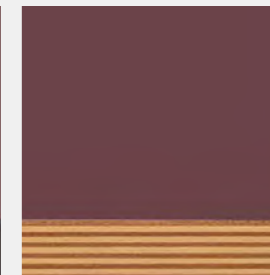
**K310** weiss | white | blanc | bianco



**K508** silber | silver | argent | argento



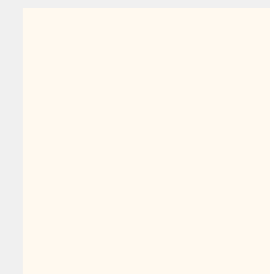
**K999** silber | silver | argent | argento



**KMPX** multiplex | multiplex | multiplex | multiplex

# CDF

- ✓ SITAGACTIVE
- ✓ SITAGACTIVE LIFTMATIC 2.1
- ✓ SITAGGO 2.0
- ✓ SITAG MCS TISCHSYSTEM
- ✓ SITAGMOVE

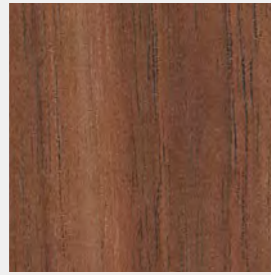


**CDF\_K310** CDF Dekor weiss, Kante schwarz | CDF decor white, edge black | CDF décor blanc, bord noir | CDF decoro bianco, bordo nero

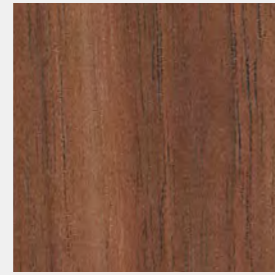
## HOLZ 2

Wood 2 | Bois 2 | Legno 2

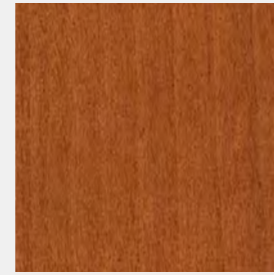
- ✓ SITAG SCHRANKPROGRAMM
- ✓ SITAG MCS SCHRANKSYSTEM
- ✓ SITAG ORGATOWER
- ✓ SITAGPORT
- ✓ SITAGACTIVE
- ✓ SITAGACTIVE LIFTMATIC 2.1
- ✓ SITAGGO 2.0
- ✓ SITAG MCS TISCHSYSTEM
- ✓ SITAG MCS RAUMGLIEDERUNGSSYSTEM
- ✓ SITAGMOVE
- ✓ SITAGASCENT
- ✓ SITAGINLINE



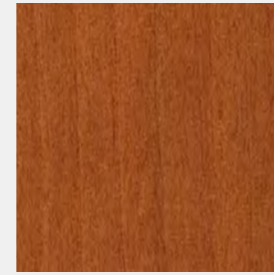
**NU10 (VS)** Nussbaum | nutwood | noyer | noce



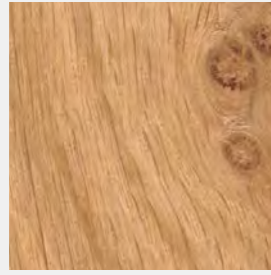
**NU00** Nussbaum matt | nutwood matt | noyer mat | noce opaco



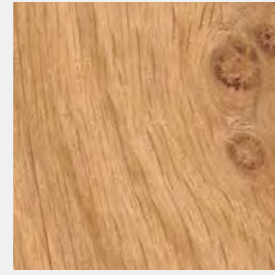
**K110** Kirschbaum | cherry | cerisier | ciliegio



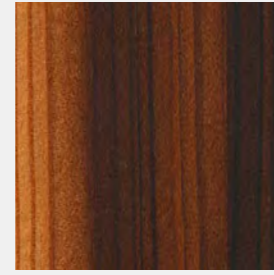
**K100** Kirschbaum matt | cherry matte | cerisier mat | ciliegio opaco



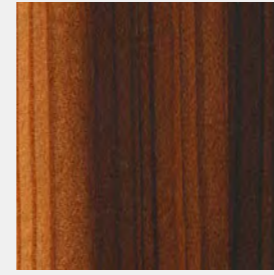
**EIA10** Eiche astig | knotty oak | chêne noueux | rovere nodoso



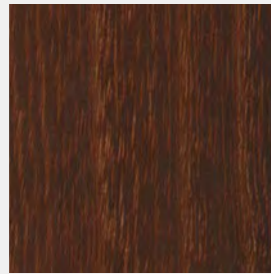
**EIA00** Eiche astig matt | knotty oak matte | chêne noueux mat | rovere nodoso opaco



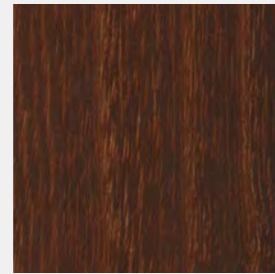
**LAG10** Lärche geräuchert | smoked larch | mélèze fumé | larice affumicato



**LAG00** Lärche geräuchert matt | smoked larch matte | mélèze fumé mat | larice affumicato opaco



**AKG10** Akazie geräuchert | smoked acacia | acacia fumé | acacia affumicato

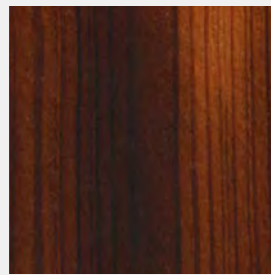


**AKG00** Akazie geräuchert matt | smoked acacia matte | acacia fumé mat | acacia affumicato opaco

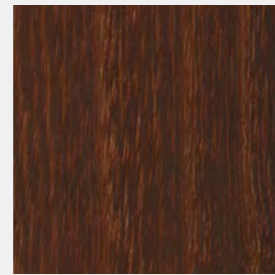
## HOLZ 2HG

Wood 2HG | Bois 2HG | Legno 2HG

- ✓ SITAGINLINE



**LAG200** Lärche geräuchert hochglanz | smoked larch high gloss | mélèze fumé brillant | larice affumicato lucida



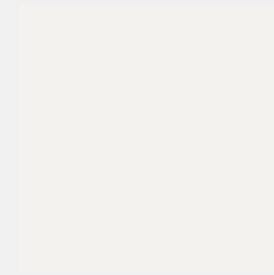
**AKG200** Akazie geräuchert hochglanz | smoked acacia high gloss | acacia fumé brillant | acacia affumicato lucida

## STRUKTUR-LACK

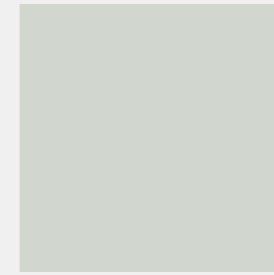
(für Holzoberflächen)

Structured varnish (for wood surfaces) | Vernis structuré (pour surfaces en bois) | Vernice strutturata (per superfici in legno)

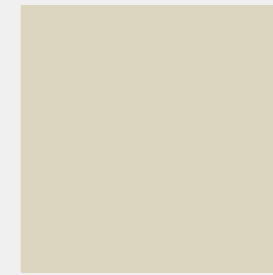
- ✓ SITAG SCHRANKPROGRAMM
- ✓ SITAG MCS SCHRANKSYSTEM
- ✓ SITAG ORGATOWER
- ✓ SITAGPORT
- ✓ SITAGINLINE



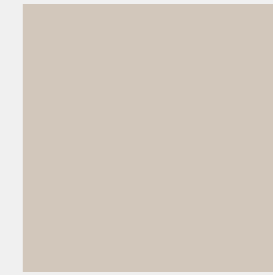
**ST01** weiss | white | blanc | Bianco (NCS-0500-N)



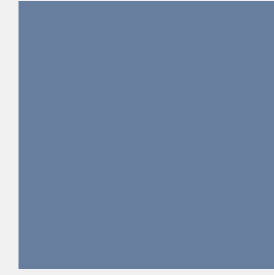
**ST10** weissgrau | white-grey | blanc gris | bianco grigio (NCS-1502-B)



**ST90** hell-beige | light beige | beige clair | beige chiaro (NCS-0505-Y10R)



**ST15** kaschmirgrau | cashmere grey | gris kashmir | grigio cashmere (NCS-S3005-Y50R)



**ST31** rauchblau | smoky blue | bleu fumé | blu fumoso (NCS-S5020-R90B)



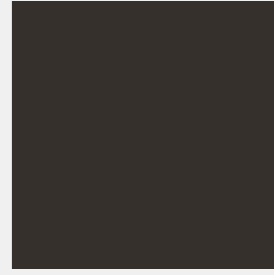
**ST24** rot-braun | red-brown | rouge brun | Rosso-marrone (NCS-6020-R10B)



**ST28** agavengrün | agave green | vert agave | verde agave (NCS-S6010-G50Y)



**ST29** trüffelbraun | truffle brown | brun truffe | marrone tartufo (NCS-S5005-Y50R)

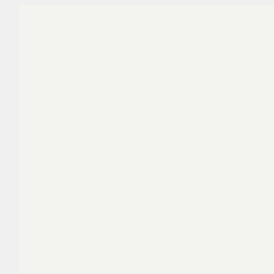


**ST13** braun-schwarz | brown-black | brun noir | Nero marrone (NCS-S9000-N)

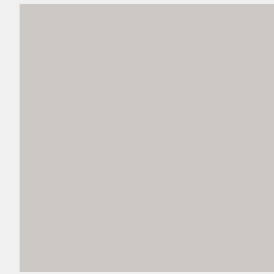
## BELAG STUMPFMATT (FENIX)

Synthetic coating dull matt | Revêtement mat terne | Rivestimento opaco

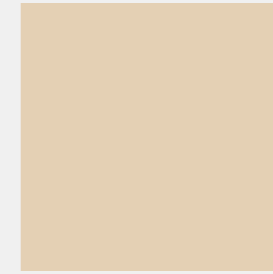
- ✓ SITAGACTIVE
- ✓ SITAGACTIVE LIFTMATIC 2.1
- ✓ SITAG MCS TISCHSYSTEM
- ✓ SITAGGO 2.0
- ✓ SITAGMOVE
- ✓ SITAGASCENT
- ✓ SITAGINLINE



**K4318 (KS)** weiss | white | blanc | bianco



**K4319** hellgrau | light grey | gris clair | grigio chiaro



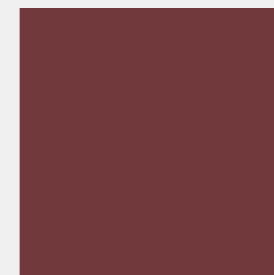
**K4312** beige | beige | beige | beige



**K4315** Organza | organza | organza | organza



**K4328 (KR)** olivgrün | olive green | vert olive | verde oliva



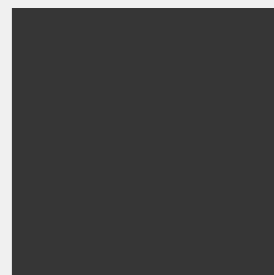
**K4330 (KP)** bordeaux | bordeaux | bordeaux | bordeaux



**K4331 (KO)** nachtblau | night blue | bleu nuit | blu notte



**K4320 (KN)** anthrazit | anthracite | anthracite | anthracite



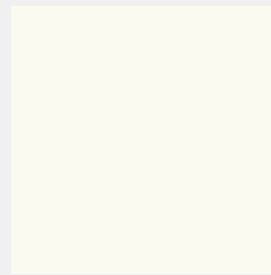
**K4317 (KJ)** schwarz | black | noir | nero

# KUNSTSTOFF

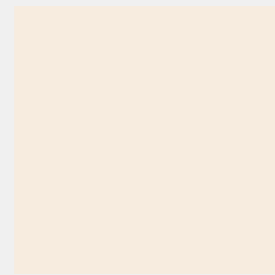
(Plattenbeschichtung)

Synthetic (board coating) |  
Synthétique (Revêtement  
de panneaux) | Materiale  
sintetico (rivestimento a  
pannelli)

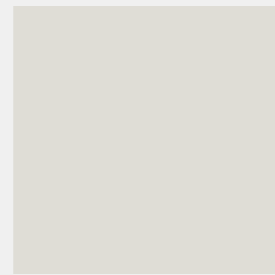
- ✓ SITAG SCHRANKPROGRAMM
- ✓ SITAG MCS SCHRANKSYSTEM
- ✓ SITAGPORT
- ✓ SITAG ORGATOWER
- ✓ SITAGACTIVE
- ✓ SITAGACTIVE LIFTMATIC 2.1
- ✓ SITAGGO 2.0
- ✓ SITAG MCS TISCHSYSTEM
- ✓ SITAG MCS RAUMGLIEDERUNGSSYSTEM
- ✓ SITAGMOVE



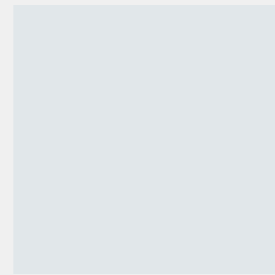
**K310** weiss | white | blanc |  
bianco (NCS-S0502-Y)



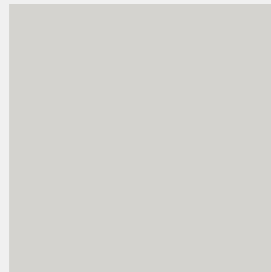
**K216 (AA)** vanille | vanilla |  
vanille | vaniglia (NCS-S1002-Y20R)



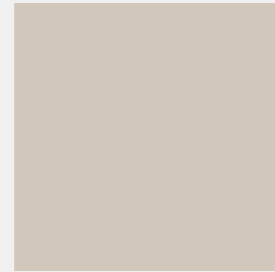
**K775 (MB/FN)** weissbeige  
| white beige | blanc beige | beige  
bianco (NCS-S1002-Y)



**K245** weissgrau | pale grey | gris  
blanc | bianco grigio (NCS-S0502-B)



**K708 (MP/BW)** mittelgrau  
| medium grey | gris moyen | grigio  
medio (NCS-S2002-G50Y)



**K702 (NK/HC)** kaschmirgrau |  
cashmere grey | gris kashmir | grigio  
cashmere (NCS-S2005-Y60R)



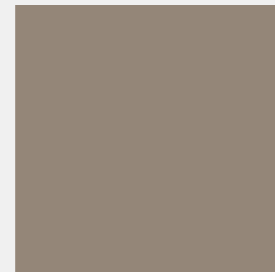
**K507 (ST)** rauchblau | smoky  
blue | bleu fumé | blu fumoso  
(NCS-S5020-R90B)



**K231** anthrazit | anthracite |  
anthracite | antracite  
(NCS-S7502-B)



**K645** agavengrün | agave green |  
vert agave | verde agave  
(NCS-S6010-G70Y)



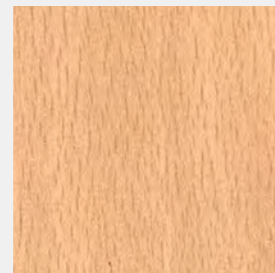
**K748** trüffelbraun | truffle brown  
| brun truffe | marrone tartufo  
(NCS-S7005-Y50R)



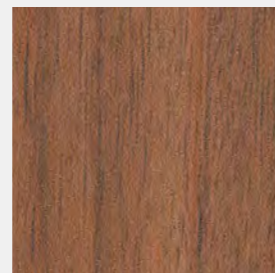
**K999 (CC/DD)** schwarz |  
black | noir | nero  
(NCS-S9000-N)



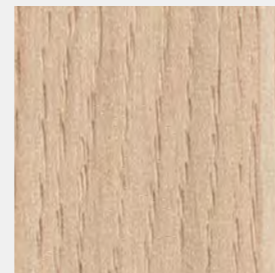
**KAD** Ahorn Dekor | maple decor |  
décor érable | acero decorativo



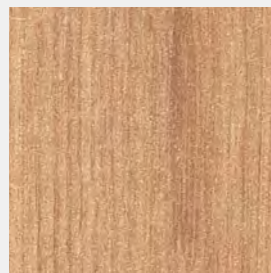
**KBD (MM/HF)** Buche Dekor |  
maple decor | décor hêtre | faggio  
decorativo



**KNU00 (NW)** Nussbaum  
Dekor | nutwood decor | décor  
noyer | noce decorativo



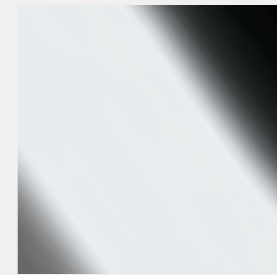
**KED (ML/HE)** Eiche Dekor |  
oak decor | décor chêne | decoro  
rovere



**KERD (HO/KU)** Eiche rustikal  
Dekor | oak rustic decor | décor chêne  
rustique | decoro rovere rustico

# OBERFLÄCHE VEREDELT

Premium finish | Finition  
spéciale | Finitura speciale



**CR** verchromt | chrome-finish |  
chromé | cromato

- ✓ SITAG MCS TISCHSYSTEM
- ✓ SITAGASCENT
- ✓ SITAGACTIVE
- ✓ SITAGMOVE

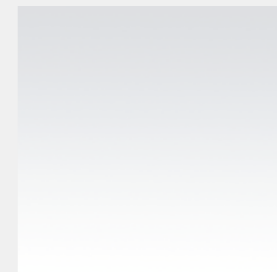


**CN** Chromstahl | chrome steel |  
acier chromé | acciaio al cromo

- ✓ SITAG MCS RAUMGLIEDERUNGSSYSTEM

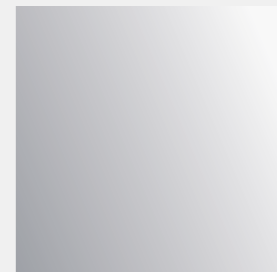
# GLAS SECURISIERT

Security glass | verre de  
sécurité | vetro di sicurezza



**KGL** Klarglas | clear glass | verre  
clair | vetro trasparente

- ✓ SITAG MCS SCHRANKSYSTEM



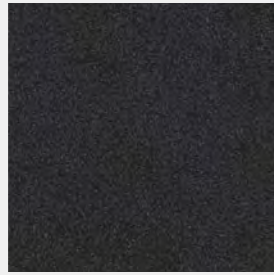
**MGL** Mattglas | frosted glass  
| verre mat | vetro opaco

- ✓ SITAG SCHRANKPROGRAMM
- ✓ SITAG MCS RAUMGLIEDERUNGSSYSTEM
- ✓ SITAG MCS SCHRANKSYSTEM

## PULVER- BESCHICHTETE FARBEN

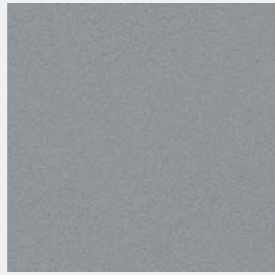
(für Metalloberflächen)

Powder-coat colours (for metal surfaces) | Peinture par poudrage (pour surfaces métalliques) | Colori a polvere (per superfici metalliche)



**AM anthrazit-metallic** | metallic anthracite | anthracite métallisé | antracite metallizzato (ähnlich | similar | similaire | simile RAL 7021)

- ✓ SITAGACTIVE
- ✓ SITAGACTIVE LIFTMATIC 2.1
- ✓ SITAG MCS TISCHSYSTEM
- ✓ SITAG MCS RAUMGLIEDERUNGSSYSTEM
- ✓ SITAGINLINE



**SI/NSI silber** | silver | argent | argento (ähnlich | similar | similaire | simile RAL 9006)

- ✓ SITAGACTIVE
- ✓ SITAG MCS TISCHSYSTEM
- ✓ SITAG MCS RAUMGLIEDERUNGSSYSTEM
- ✓ SITAGINLINE



**SW schwarz** | black | noir | nero (RAL 9011)

- ✓ SITAGACTIVE
- ✓ SITAG MCS RAUMGLIEDERUNGSSYSTEM
- ✓ SITAGASCENT
- ✓ SITAGINLINE



**PW perlweiss** | pearl white | blanc perle | bianco perla (RAL 9010)

- ✓ SITAGACTIVE
- ✓ SITAGACTIVE LIFTMATIC 2.1
- ✓ SITAG MCS TISCHSYSTEM
- ✓ SITAG MCS RAUMGLIEDERUNGSSYSTEM
- ✓ SITAGINLINE

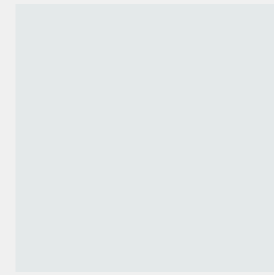


**BS braun-schwarz** | brown-black | brun noir | nero brunastro (RAL 8022)

- ✓ SITAG MCS RAUMGLIEDERUNGSSYSTEM
- ✓ SITAGINLINE

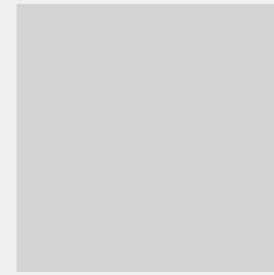
## ROLLLADEN

Roller shutters | Rideaux | Avvolgibili



**WG weissgrau** | white grey | gris blanc | bianco grigio

- ✓ SITAG SCHRANKPROGRAMM
- ✓ SITAG MCS SCHRANKSYSTEM



**HG hellgrau** | light grey | gris clair | grigio chiaro

- ✓ SITAG SCHRANKPROGRAMM



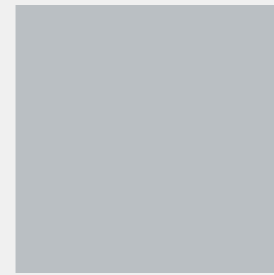
**SW schwarz** | black | noir | nero

- ✓ SITAG SCHRANKPROGRAMM



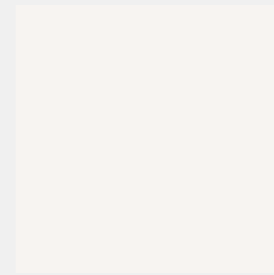
**AZ anthrazit** | anthracite | anthracite | antracite

- ✓ SITAG SCHRANKPROGRAMM
- ✓ SITAG MCS SCHRANKSYSTEM



**SI silber** | silver | argent | argento

- ✓ SITAG SCHRANKPROGRAMM



**WE weiss** | white | blanc | bianco

- ✓ SITAG SCHRANKPROGRAMM
- ✓ SITAG MCS SCHRANKSYSTEM

## MUSCHEL-GRIF

Recessed handles |  
Poignée coquille | Maniglia  
a conchiglia

✓ SITAG SCHRANKPROGRAMM  
✓ SITAG MCS SCHRANKSYSTEM  
✓ SITAG ORGATOWER



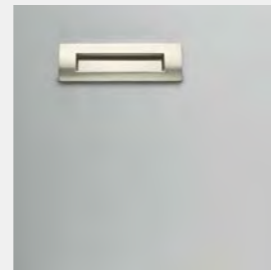
**AM** anthrazit-metallic | metallic  
anthracite | anthracite métallisé |  
antracite metallizzato



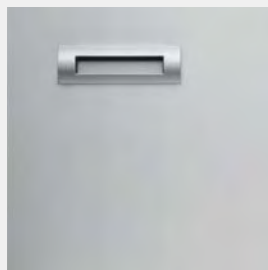
**SI** silber | silver | argent | argento



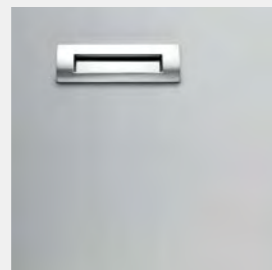
**SW** schwarz | black | noir | nero



**PW** perlweiss | pearl white | blanc  
perle | bianco perla



**ALU** Aluminium | aluminium |  
aluminium | aluminium



**CR** verchromt | chrome finish |  
chromé | cromato

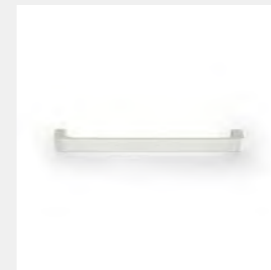
## C-GRIF

C-handles | Poignée C |  
Maniglia C

✓ SITAG SCHRANKPROGRAMM  
✓ SITAG MCS SCHRANKSYSTEM  
✓ SITAG ORGATOWER



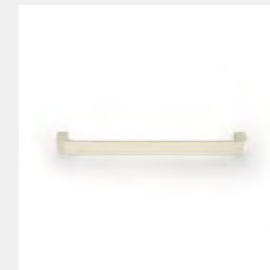
**AM** anthrazit-metallic | metallic  
anthracite | anthracite métallisé |  
antracite metallizzato



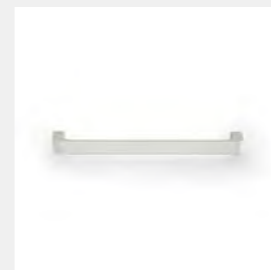
**SI** silber | silver | argent | argento



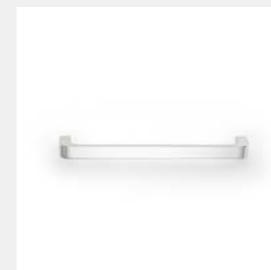
**SW** schwarz | black | noir | nero



**PW** perlweiss | pearl white | blanc  
perle | bianco perla



**ALU** Aluminium | aluminium |  
aluminium | aluminium



**CR** verchromt | chrome finish |  
chromé | cromato

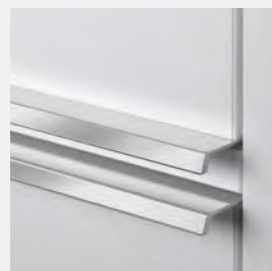
## LISENEN-GRIF

L-section pull handles |  
Poignée lésène | Presa a  
lesena

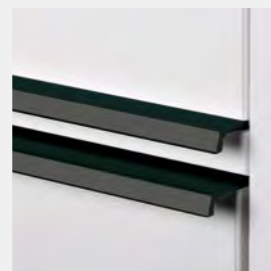
✓ SITAG SCHRANKPROGRAMM  
✓ SITAG MCS SCHRANKSYSTEM  
✓ SITAG ORGATOWER



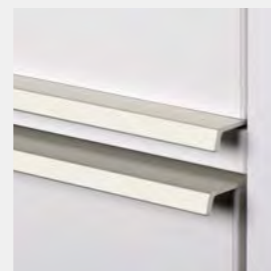
**AM** anthrazit-metallic | metallic  
anthracite | anthracite métallisé |  
antracite metallizzato



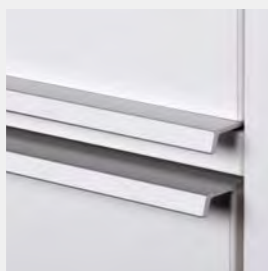
**SI** silber | silver | argent | argento



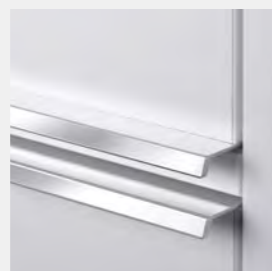
**SW** schwarz | black | noir | nero



**PW** perlweiss | pearl white | blanc  
perle | bianco perla



**ALU** Aluminium | aluminium |  
aluminium | aluminium



**CR** verchromt | chrome finish |  
chromé | cromato

## STANGEN-GRIF

T-bar handles | Poignée  
tige | Maniglia a sbarra

✓ SITAG SCHRANKPROGRAMM  
✓ SITAG MCS SCHRANKSYSTEM  
✓ SITAG ORGATOWER



**AM** anthrazit-metallic | metallic  
anthracite | anthracite métallisé |  
antracite metallizzato



**SI** silber | silver | argent | argento



**SW** schwarz | black | noir | nero



**PW** perlweiss | pearl white | blanc  
perle | bianco perla



**ALU** Aluminium | aluminium |  
aluminium | aluminium



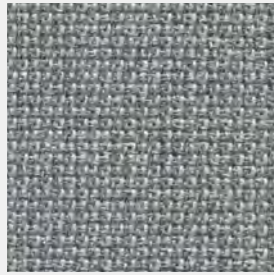
**CR** verchromt | chrome finish |  
chromé | cromato

## STOFF TWIST MELANGE STELLWÄNDE

Fabric Twist Melange,  
Partition walls | Tissu Twist  
Melange, Cloisons | Tessuto  
Twist Melange, Pannelli e  
schermi protettivi

- ✓ SITAGACTIVE\*
- ✓ SITAGACTIVE LIFTMATIC 2.1\*
- ✓ SITAGGO 2.0\*
- ✓ SITAGeUP PRIME\*
- ✓ SITAG MCS TISCHSYSTEM\*
- ✓ SITAG MCS SCHRANKSYSTEM
- ✓ SITAG MCS  
RAUMGLIEDERUNGSSYSTEM
- ✓ SITAG SCHRANKPROGRAMM

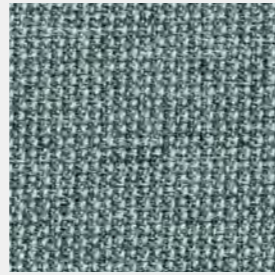
\*Aufsatzwände | Attached cabinet  
elements | Élément de structure  
armoire | Elemento applicabile per  
armadio



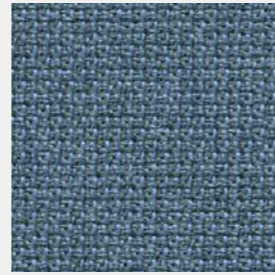
**TM75** grau | grey | gris | grigio



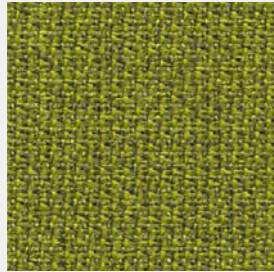
**TM09** sand | sandy | sable | sabbia



**TM39** mint | mint | menthe | menta



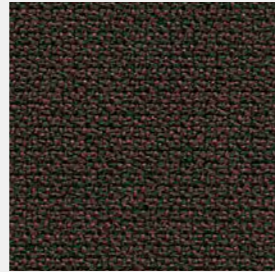
**TM80** blau | blue | bleu | blu



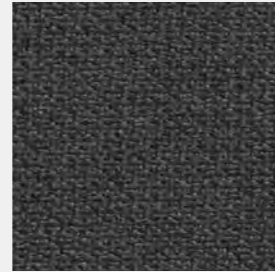
**TM35** grün | green | vert | verde



**TM37** oliv | olive | olive | oliva



**TM30** braun-schwarz | brownish  
black | noir brun | nero brunastro



**TM77** anthrazit | anthracite  
anthracite | antracite

## STOFF LUCIA STELLWÄNDE

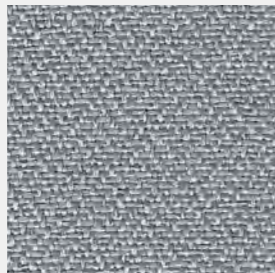
Fabric Lucia, Partition  
walls | Tissu Lucia, Cloisons  
| Tessuto Lucia, Pannelli e  
schermi, protettivi

- ✓ SITAGACTIVE\*
- ✓ SITAGACTIVE LIFTMATIC 2.1\*
- ✓ SITAGGO 2.0\*
- ✓ SITAGeUP PRIME\*
- ✓ SITAG MCS TISCHSYSTEM\*
- ✓ SITAG MCS SCHRANKSYSTEM
- ✓ SITAG MCS  
RAUMGLIEDERUNGSSYSTEM
- ✓ SITAG SCHRANKPROGRAMM

\*Aufsatzwände | Attached cabinet  
elements | Élément de structure  
armoire | Elemento applicabile per  
armadio



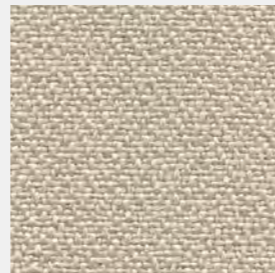
**4869** blaugrau | blue-grey | gris  
bleu | grigio blu



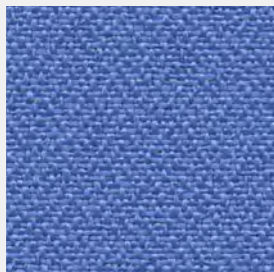
**4871** grau | grey | gris | grigio



**4834** hellgrün | bright green |  
vert clair | verde chiaro



**4809** sand | sandy | sable | sabbia



**4888** hellblau | bright blue | bleu  
clair | celeste



**4883** dunkelblau | dark blue | bleu  
foncé | blu scuro



**4860** leuchtrot | vivid red | rouge  
lumineux | rosso luminoso

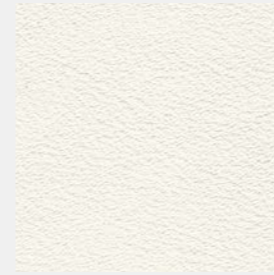


**4885** schwarz | black | noir | nero

## LEDER SELECT

Leather "Select" | Cuir  
"Select" | Pelle "Select"

- ✓ SITAGACTIVE
- ✓ SITAGACTIVE LIFTMATIC 2.1
- ✓ SITAGGO 2.0
- ✓ SITAG MCS TISCHSYSTEM
- ✓ SITAG MCS  
RAUMGLIEDERUNGSSYSTEM
- ✓ SITAG ASCENT
- ✓ SITAGLINE



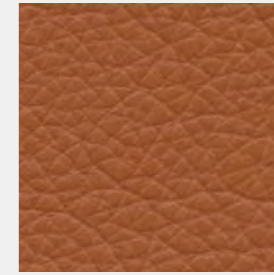
**LS390 (LS02)** weiss | white |  
blanc | bianco



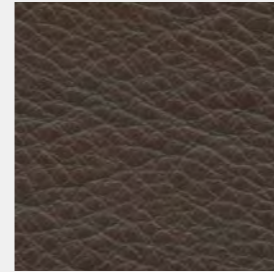
**LS310** kaschmir | cashmere |  
cachemire | cashmere



**LS325 (LS09)** sand | sandy |  
sable | sabbia



**LS307 (LS50)** cognac | cognac |  
cognac | cognac



**LS306 (LS30)** mokka | mocha  
| moka | mocca



**LS350 (LS82)** marine | navy  
blue | bleu marine | marineblu



**LS620** olivgrün | olive green | vert  
olive | verde oliva



**LS339** weinrot | wine red | rouge  
vin | rosso vino



**LS358** steingrau | stone grey |  
gris pierre | grigio pietra



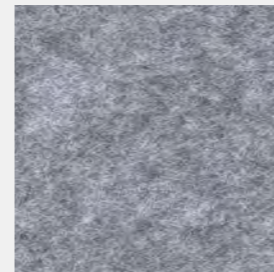
**LS301 (LS85)** schwarz | black  
| noir | nero

## AKUSTIKFILZ

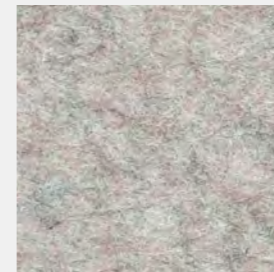
Acoustic felt | Feutre  
acoustique | Feltro acustico

- ✓ SITAG AKUSTIKWAND
- ✓ SITAGACTIVE\*
- ✓ SITAGACTIVE LIFTMATIC 2.1\*
- ✓ SITAGGO 2.0\*
- ✓ SITAGeUP PRIME\*
- ✓ SITAG MCS TISCHSYSTEM\*

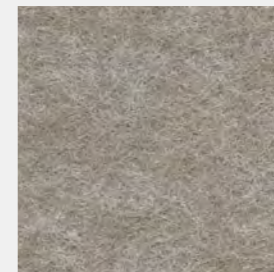
\*Aufsatzwände | Attached cabinet  
elements | Élément de structure  
armoire | Elemento applicabile per  
armadio



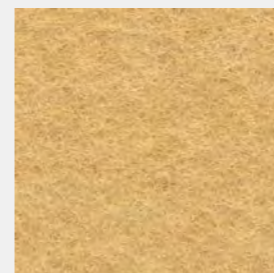
**FC04** grau | grey | gris | grigio



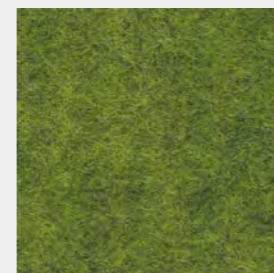
**FC05** sandgrau | sand grey | gris  
sable | grigio sabbia



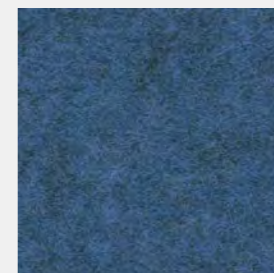
**FC07** beige | beige | beige | beige



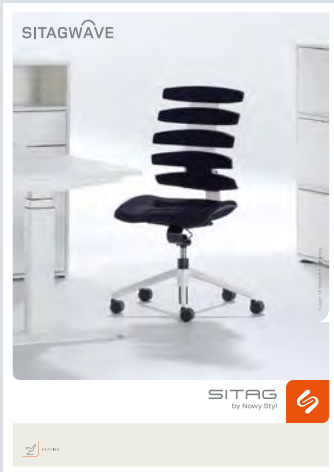
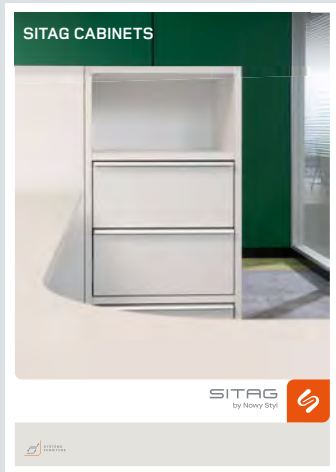
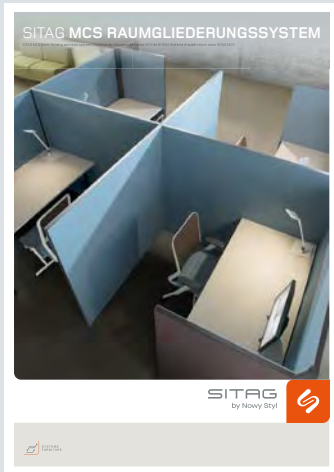
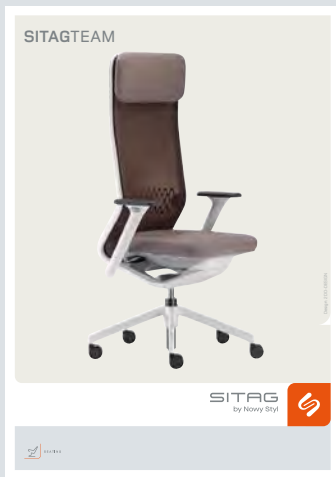
**FC08** gelb | yellow | jaune | giallo



**FC09** grün | green | vert | verde



**FC10** blau | blue | bleu | blu



**| D |** Technische Änderungen, Druckfehler und Programmänderungen vorbehalten. Farbabweichungen von den Originalfarben sind drucktechnisch bedingt.  
**| E |** Subject to technical and programme alterations, printing errors, and other errors. Printed colours may vary from actual colours.  
**| F |** Sous réserve de modifications techniques, d'erreurs d'impression et d'altérations du programme. Les couleurs reproduites peuvent différer des couleurs originales.  
**| I |** Con riserva di modifiche tecniche, errori di stampa e cambiamenti di programma. Eventuali differenze di colore tra le immagini e i prodotti reali sono dovute alla stampa.



SITAG by Nowy Styl SA  
 Fléchères 7A  
 CH-1274 Signy  
 T +41 22 3614727  
 info.nyon@sitag.ch

SITAG by Nowy Styl AG  
 Brown-Boveri-Str. 5  
 CH-8050 Zürich-Oerlikon  
 T +41 44 8637272  
 info.zuerich@sitag.ch

Nowy Styl Headquarters  
 ul. Pużaka 49  
 PL-38-400 Krosno  
 T +48 572 900 333  
 sales@nowystyl.com

SITAG by Nowy Styl AG  
 Simon Frick-Str. 3a  
 CH-9466 Sennwald

T +41 81 7581818  
 info@sitag.ch  
 www.sitag.ch

